

AP 65 Mounting Kit Installation Notes

These *Installation Notes* provide instructions for mounting the AP 65 Wireless Access Point using the AP 65 mounting kit (part number AP-65-MNT).

The AP 65 mounting kit can be used to securely attach the AP 65 Wireless Access Point to a wall, ceiling, office cubicle, or most flat surfaces, as well as provide additional anti-theft security protection.

Additionally, the AP 65 may also be mounted directly (without the use of this kit) to a ceiling tile / rail system using the snap-in 15/16" ceiling tile rail guide slots integrated on the rear of the AP 65 enclosure.

Before installing the AP 65, please read the *AP 65 Wireless Access Point Quick Installation Guide* as well as these *Installation Notes* to determine what tools and accessories (if any) are required and are not included in the AP-65-MNT kit.

Package Contents

The following components are included in your AP-65-MNT kit:

- Wall mounting cradle
- Security T-bar
- Cradle mounting screws (6-32 x 1" Phillips Flat Head) (2)
- Security T-bar mounting screw (6-32 x 1" Torx Head) (1)

Inform your supplier if there are any incorrect, missing or damaged parts. If possible, retain the original packing materials and use them to repack the product in case there is a need to return it.

Before Getting Started

Select a location as close as possible to the center of the intended coverage area. The service location should be free from obstructions or obvious sources of interferences. Normally, the higher you place an access point or air monitor, the better its performance will be.

Use the following specifications to determine the proper clearance in your intended location.

The AP 65 dimensions (HxWxD) are:

With antenna stowed:	100mm x 100mm x 37mm 3.94 x 3.94" x 1.47"
With antenna fully extended:	167mm x 100mm x 37mm 6.58" x 3.94" x 1.47"
AP 65 unit weight is:	0.227 kilos 0.5 lbs

Secure Wall Mounting

The AP-65-MNT mounting cradle can be used to mount the AP 65 directly to a wall, ceiling, underneath a counter, or similar flat surface. Two screw holes on the mounting cradle support installation of the cradle directly onto a pre-installed, in-wall, NEMA-style gang box.

To mount the AP 65 to a wall, ceiling, or similar flat surface:

1. Insert the Fast Ethernet (FE) cable through the hole in the mounting cradle, then attach the mounting cradle to the surface using the appropriate fasteners (not included) or the screw holes on the in-wall gang box.

If necessary, attach an RJ-45 male connector to the FE cable.

2. (Optional) Align and attach the AP security T-bar to the AP 65 as shown (see [Figure 1](#)).

The security T-bar deters theft of the AP 65 when installed in areas where security cannot be guaranteed. It is not required for mounting the AP 65.

3. Insert the FE connector into the FE port.
4. Align the AP 65 with the mounting slots as shown in [Figure 1](#). Push the AP onto the mounting tabs to secure the AP 65 in place.
5. If you are using the security T-bar, secure the T-bar to the mounting cradle with the security T-bar screw.

6. Orient the antennas for optimal performance. Typically, the best results are achieved when the antennas are oriented vertically.

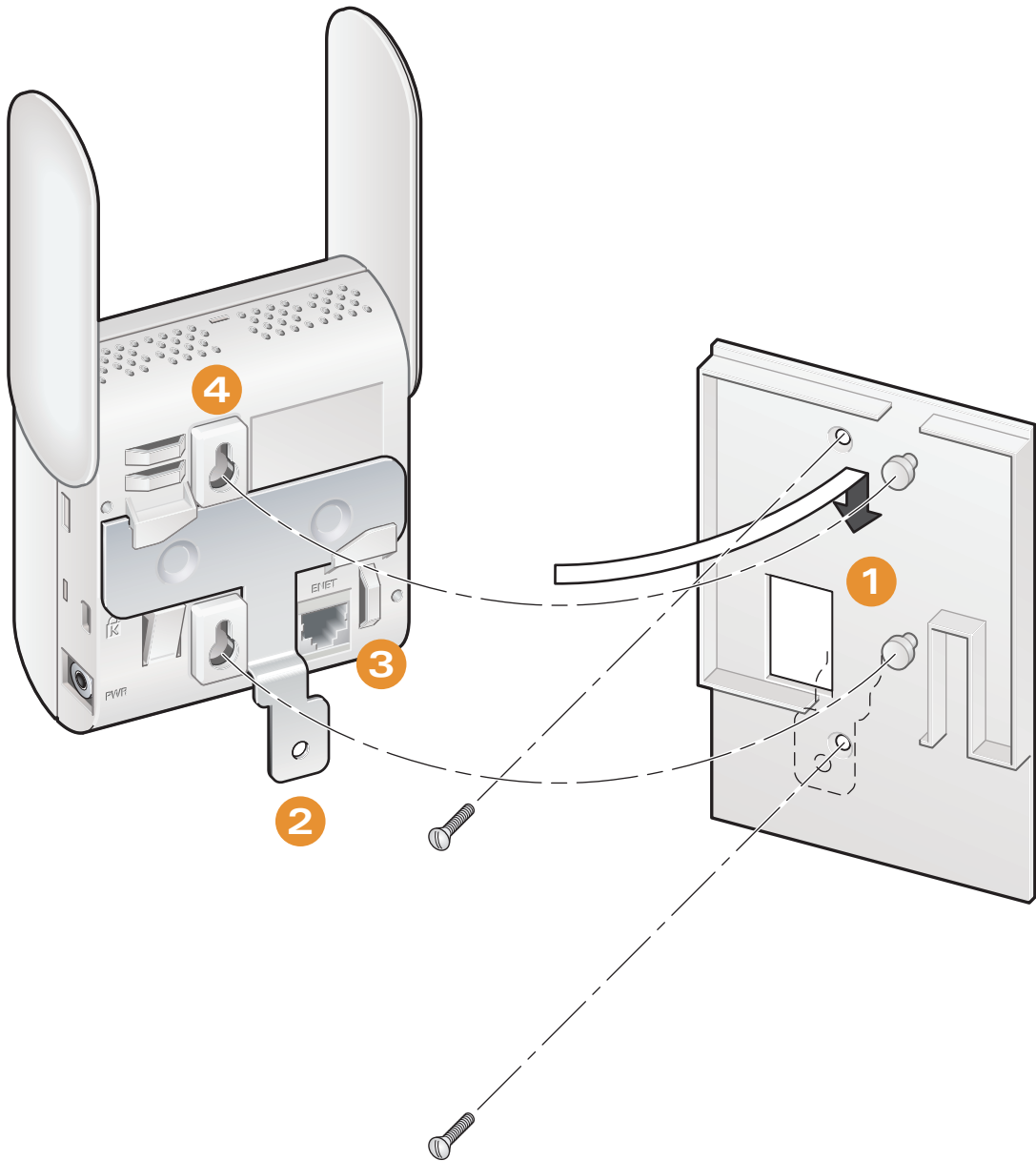


Figure 1 Wall mounting the AP 65

Mounting To A Ceiling Tile Rail System

The AP 65 enclosure supports an integrated 15/16" ceiling tile rail guide slot, designed to snap onto standard 15/16" tile rails (the use of this kit for this purpose is not required).

To mount the AP 65 to a ceiling:

1. Pull the Fast Ethernet (FE) cable through a prepared hole in a ceiling tile at the location where you want to install the AP 65.
2. Insert the FE cable into the FE port on the rear of the AP 65.
3. Align the AP 65 with the appropriate ceiling tile rail, engaging the rail at approximately a 30 degree angle (see [Figure 2](#)).

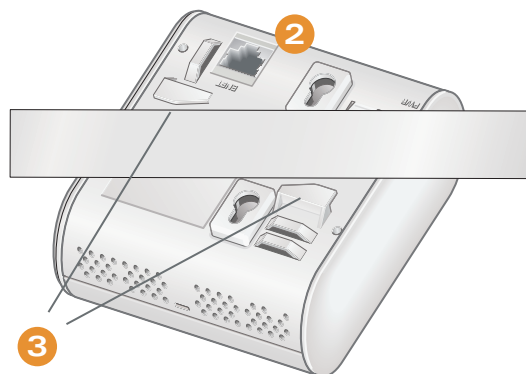


Figure 2 Engaging the ceiling tile rail

4. Make sure the FE cable will retract into the ceiling area allowing the AP 65 to fit flush against the ceiling.
5. Pushing gently against the ceiling rail, twist the AP 65 clockwise until the AP and the rail click into place (see [Figure 3](#)).
6. Orient the antennas for optimal performance. Typically, the best results are achieved when the antennas are oriented vertically.



Caution: Make sure the AP 65 clicks into place on the tile rail. Failure to securely engage the ceiling rails into the built-in ceiling tile rail slots on the rear of the AP 65 could cause it to fall and possibly injure people or equipment.

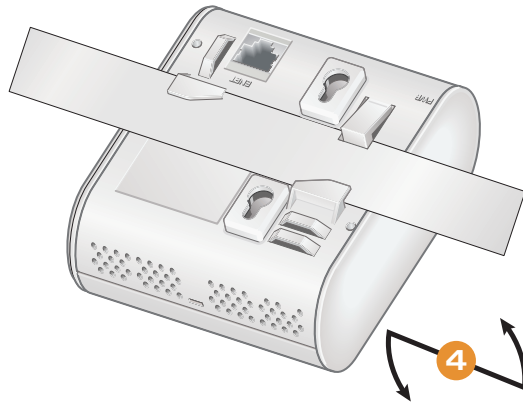


Figure 3 Securing the AP 65 to the ceiling tile rail

